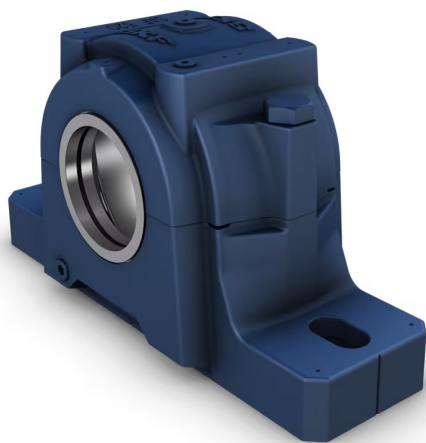


SAF 520

Split plummer (pillow) block housing without bearing

SAF split plummer (pillow) block housings have a two-piece, cast metal construction with inch dimensions. These housings have been developed to be the best choice for design, quality, robustness, and cost efficiency. SAF housings, when used with SKF bearings, seals and related components, provide a tailored solution to achieve maximum service life and reduce maintenance requirements for rotating equipment.

- Robust design
- Customizable configurations
- Suitable for tough operating conditions
- Cost-effective bearing solution



Overview

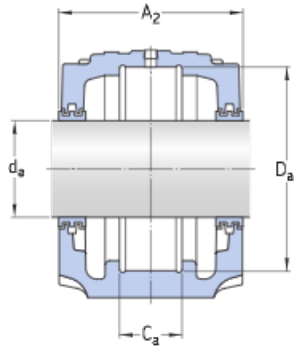
Dimensions

Diameter of bearing seat	180 mm
Centre height (pillow block)	114.3 mm
Centre distance between bolt holes	314.325 mm
Attachment bolt diameter	22.225 mm

Properties

Housing type	Pillow block
Housing configuration	Two-piece
Mounting arrangement	Through shaft/Shaft end
Number of bolt holes for fasteners	2
Material, housing	Cast iron
Bearing housing seal type	Labyrinth seal
Housing lubrication feature/possibility	Grease/Oil

Technical Specification



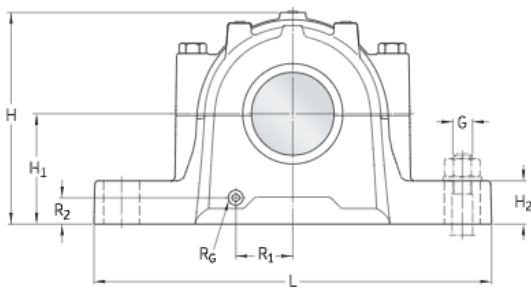
Dimensions

Shaft

d _a	87.313 mm	Shaft diameter
----------------	-----------	----------------

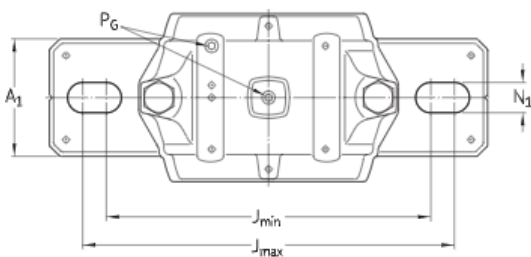
Bearing seat

D _i	180 mm	Diameter of bearing seat
G7		Tolerance class of bearing seat diameter
C _a	55.804 mm	Width of bearing seat
H _i	114.3 mm	Centre height



Outside dimensions

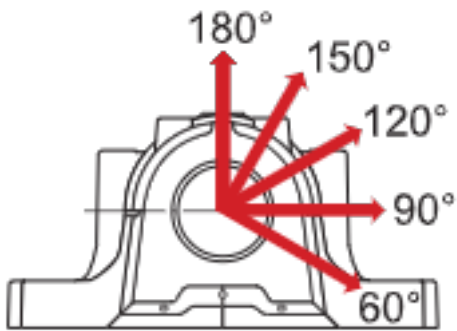
A ₁	111.125 mm	Foot width
A ₂	153.194 mm	Overall width
H	217.488 mm	Overall height
H ₂	44.45 mm	Foot height
J	min. 295.275 mm	Distance between attachment bolts
J	max. 333.375 mm	Distance between attachment bolts
L	387.35 mm	Overall length
N ₁	25.4 mm	Width of attachment bolt hole



Threaded holes

R ₁	58.738 mm	Distance of drain plug from centre
R ₂	30.163 mm	Height of drain plug position
R _G	3/8-18 NPT	Thread of drain hole
P _G	1/4-18 NPT	Thread of grease fitting in cap

Recommended safe loads



P_{60}	136 kN	Safe load at 60° load angle
P_{90}	81.4 kN	Safe load at 90° load angle
P_{120}	50.7 kN	Safe load at 120° load angle
P_{150}	46.3 kN	Safe load at 150° load angle
P_{180}	55.6 kN	Safe load at 180° load angle
P_a	36.1 kN	Safe load, axial

Materials

Housing material	Cast iron
Corrosion protection	Paint - in accordance with ISO 12944-2, corrosivity category C2

Mass

Mass housing	21.3 kg
--------------	---------

Mounting information

Cap bolt		3/4-10 UNC x 4
Number of cap bolts		2
SAE grade of cap bolt		5
Recommended tightening torque for cap bolts		203.373 N·m
Recommended diameter for attachment bolts	G	22.225 mm
Width of included locating ring		9.728 mm

Included products

Seal		2 x LOR 102
Locating ring		SR-20-17

Associated products

End cover

EPR 12

PosiTrac Plus contact element

2 x B 10724-102

Terms and conditions

By accessing and using this website / app owned and published by AB SKF (publ.) (556007-3495 - Gothenburg) ("SKF"), you agree to the following terms and conditions:

Warranty Disclaimer and Limitation of Liability

Although every care has been taken to assure the accuracy of the information on this website / app, SKF provides this information "AS IS" and DISCLAIMS ALL WARRANTIES, EXPRESS OR IMPLIED, INCLUDING, BUT NOT LIMITED TO, IMPLIED WARRANTIES OF MERCHANTABILITY AND FITNESS FOR A PARTICULAR PURPOSE. You acknowledge that your use of this website / app is at your sole risk, that you assume full responsibility for all costs associated with use of this website / app, and that SKF shall not be liable for any direct, incidental, consequential, or indirect damages of any kind arising out of your access to, or use of the information or software made available on this website / app. Any warranties and representations in this website / app for SKF products or services that you purchase or use will be subject to the agreed upon terms and conditions in the contract for such product or service. Further, for non-SKF websites / apps that are referenced in our website / app or where a hyperlink appears, SKF makes no warranties concerning the accuracy or reliability of the information in these websites / apps and assumes no responsibility for material created or published by third parties contained therein. In addition, SKF does not warrant that this website / app or these other linked websites / apps are free from viruses or other harmful elements.

Third Party Services

When viewing YouTube content via the SKF website(s) (i.e. using YouTube API Services), you agree to be bound by the YouTube Terms of Service.

Copyright

Copyright in this website / app copyright of the information and software made available on this website / app rest with SKF or its licensors. All rights are reserved. All licensed material will reference the licensor that has granted SKF the right to use the material. The information and software made available on this website / app may not be reproduced, duplicated, copied, transferred, distributed, stored, modified, downloaded or otherwise exploited for any commercial use without the prior written approval of SKF. However, it may be reproduced, stored and downloaded for use by individuals without prior written approval of SKF. Under no circumstances may this information or software be supplied to third parties.

This website / app includes certain images used under license from Shutterstock, Inc.

Trademarks and Patents

All trademarks, brand names, and corporate logos displayed on the website / app are the property of SKF or its licensors, and may not be used in any way without prior written approval by SKF. All licensed trademarks published on this website / app reference the licensor that has granted SKF the right to use the trademark. Access to this website / app does not grant to the user any license under any patents owned by or licensed to SKF.

Changes

SKF reserves the right to make changes or additions to this website / app at any time.