



# MASTER LEDtube Mains T5



## MAS LEDtube 1200mm HO 26W 840 T5

The new Philips Master LEDtube Mains T5 brings simplicity to your lighting project. You don't need to pay attention to the driver technology anymore. Thanks to a unique design, Philips MASTER LEDtube Mains T5 installs in luminaires operating on mains power connection. So simple to operate! . Perfectly safe, reliable & easy to install Philips MASTER LEDtube Mains T5 is the ideal alternative to standard fluorescent tubes to maximize value over lifetime with high energy saving and lower maintenance costs.

### Product data

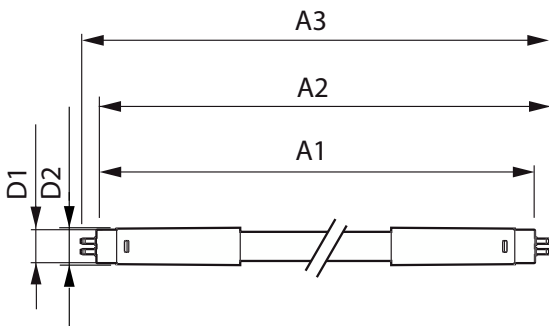
General Information		LLMF At End Of Nominal Lifetime (Nom)	
Cap-Base	G5 [G5]		70 %
Nominal lifetime	50,000 hour(s)	Flickering value (PstLM)	1
Switching Cycle	200,000	Stroboscopic effect value (SVM)	0.4
Lighting Technology	LED	Photobiological safety according to EN 62471 RGO	
Flux measurement reference	Sphere	Operating and Electrical	
CE mark	Yes	Line Frequency	50 to 60 Hz
EU RoHS compliant	Yes	Input Frequency	50 to 60 Hz
Light Technical		Power Consumption	26 W
Color Code	840 [CCT of 4000K]	Lamp Current (Nom)	125 mA
Beam Angle (Nom)	200 degree(s)	Wattage Equivalent	54 W
Luminous Flux	3,900 lumen	Starting Time (Nom)	0.5 s
Color Designation	Cool White (CW)	Warm-up time to 60% light	0.5 s
Correlated Color Temperature (Nom)	4000 K	Power Factor (Fraction)	0.92
Luminous Efficacy (rated) (Nom)	150 lm/W	Voltage (Nom)	220-240 V
Color Consistency	<6	LED alternative to fluorescent lamp power	54 W
Color rendering index (CRI)	80		

# MASTER LEDtube Mains T5

Temperature	
Ambient temperature range	-20 to +45 °C
T-Case Maximum (Nom)	65 °C
Controls and Dimming	
Dimmable	No
Mechanical and Housing	
Bulb Finish	Frosted
Bulb Material	Glass
Product Length	1,200 mm
Bulb Shape	T5
Approval and Application	
Energy Efficiency Class	D
Energy Saving Product	Yes
Approval Marks	RoHS compliance TUV CE marking KEMA Keur certificate

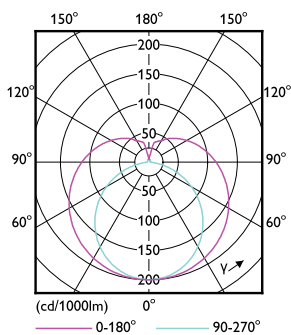
Energy Consumption kWh/1000 h	26 kWh
EPREL Registration Number	1476416
Product Data	
Full product code	871869681923400
Order product name	MAS LEDtube 1200mm HO 26W 840 T5
Order code	929001908602
Numerator - Quantity Per Pack	1
Numerator - Packs per outer box	10
Material Nr. (12NC)	929001908602
Full product name	MAS LEDtube 1200mm HO 26W 840 T5
EAN/UPC - Case	8718696819241
EAN/UPC - Product/Case	8718696819234

## Dimensional drawing

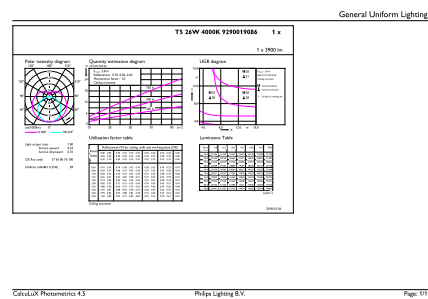


Product	D1	D2	A1	A2	A3
MAS LEDtube 1200mm HO 26W 840 T5	15.5 mm	17.1 mm	1,149 mm	1,156 mm	1,163 mm

## Photometric data



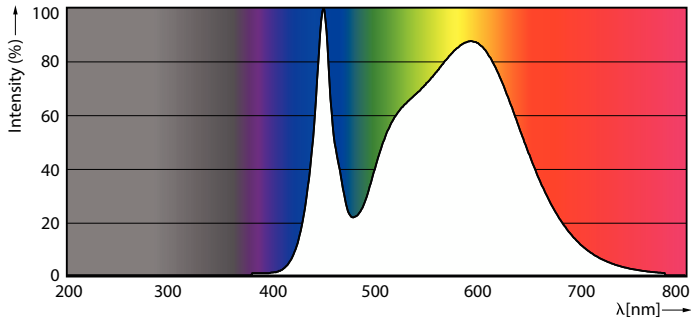
Light Distribution Diagram - MAS LEDtube 1200mm HO 26W 840 T5



General uniform lighting - MAS LEDtube 1200mm HO 26W 840 T5

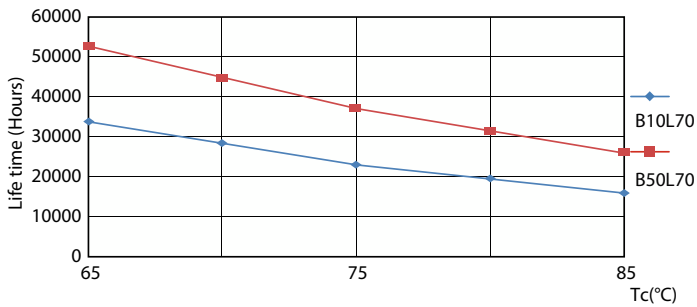
# MASTER LEDtube Mains T5

## Photometric data

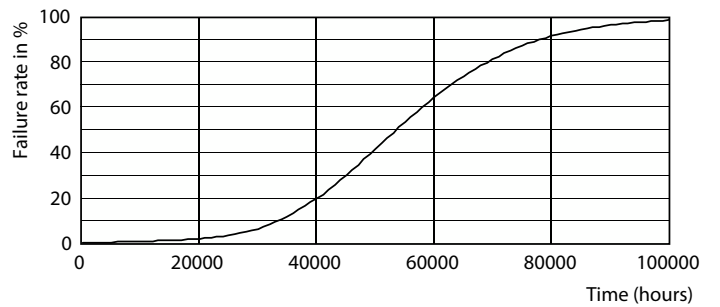


Spectral Power Distribution Colour - MAS LEDtube 1200mm HO 26W 840 T5

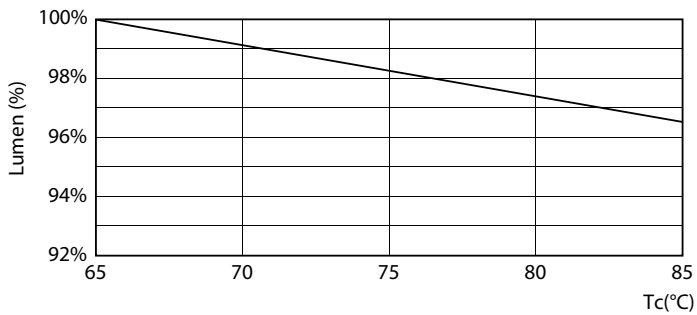
## Lifetime



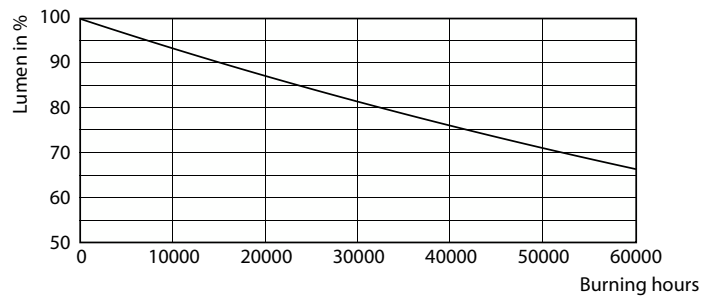
Life Expectancy Diagram - MAS LEDtube 1200mm HO 26W 840 T5



Life Expectancy Diagram - MAS LEDtube 1200mm HO 26W 840 T5



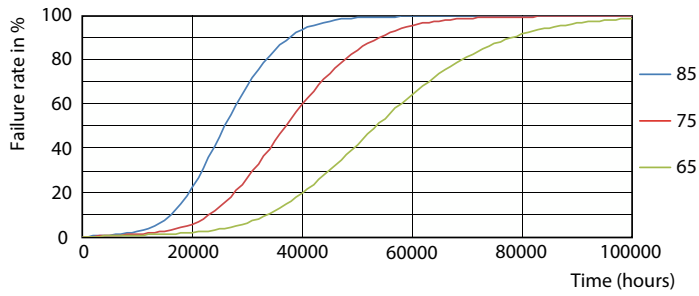
Lumen Maintenance Diagram - MAS LEDtube 1200mm HO 26W 840 T5



Lumen Maintenance Diagram - MAS LEDtube 1200mm HO 26W 840 T5

# MASTER LEDtube Mains T5

## Lifetime



Life Expectancy Diagram - MAS LEDtube 1200mm HO 26W 840 T5

