

FL SWITCH 1001T-4POE-GT-SFP - Industrial Ethernet Switch



1026932

<https://www.phoenixcontact.com/pc/products/1026932>

Please be informed that the data shown in this PDF document is generated from our online catalog. Please find the complete data in the user documentation. Our general terms of use for downloads are valid.



Unmanaged PoE Switches 1000, 1 RJ45 port 10/100/1000 Mbps, 1 SFP port 1000 Mbps, 4 RJ45 ports 10/100/1000 Mbps

Your advantages

- POE status LED per port
- Redundant power supply
- Wide -40° ... +75°C temperature range
- Autocrossing
- Auto negotiation
- Wide-range power supply of 18 ... 57 V DC
- Automatic detection of IEEE 802.3at or 802.3af powered devices

Commercial data

Item number	1026932
Packing unit	1 pc
Minimum order quantity	1 pc
Product key	DNN115
Catalog page	Page 303 (C-6-2019)
GTIN	4055626520346
Weight per piece (including packing)	657.9 g
Weight per piece (excluding packing)	492 g
Customs tariff number	85176200
Country of origin	TW

FL SWITCH 1001T-4POE-GT-SFP - Industrial Ethernet Switch



1026932

<https://www.phoenixcontact.com/pc/products/1026932>

Technical data

Dimensions

Width	30 mm
Height	149 mm
Depth	107.8 mm

Notes

General	Mode A PoE
Utilization restriction	
EMC note	EMC: class A product, see manufacturer's declaration in the download area

Mounting

Mounting type	DIN rail mounting
---------------	-------------------

Interfaces

Ethernet

Connection method	RJ45
Note on the connection method	Auto negotiation and autocrossing
Transmission speed	10/100/1000 Mbps
Transmission physics	Ethernet RJ45
Transmission length	100 m (Between transmitter / receiver)
Signal LEDs	LNK/ACT, POE
No. of channels	1 (RJ45 port)

Fiber optic interface

Number of interfaces	1
Connection method	SFP
Transmission speed	1000 Mbps (full duplex)
Transmission physics	Depending on the SFP module
Transmission length	up to 80 km (Depending on the fiber/SFP module used)
No. of channels	1 (SFP port)

Ethernet (PoE)

Connection method	RJ45
Transmission speed	10/100/1000 Mbps
Transmission physics	Ethernet RJ45
Transmission length	100 m (Between transmitter / receiver)
Signal LEDs	LNK/ACT, POE
No. of channels	4 (RJ45 ports)

Product properties

Type	Stand-Alone
------	-------------

FL SWITCH 1001T-4POE-GT-SFP - Industrial Ethernet Switch



1026932

<https://www.phoenixcontact.com/pc/products/1026932>

Product type	Switch
Product family	Unmanaged PoE Switches 1000
MTTF	66.6 Years (MIL-HDBK-217F standard, temperature 25°C, operating cycle 100%)

Switch functions

Basic functions	Store-and-forward switch, 10/100/1000 Mbps, auto negotiation, redundant power supply, PoE according to IEEE 802.3at/802.3af, jumbo frames up to 10240 bytes, alarm contact
Signal contact control voltage	48 V DC
Signal contact control current	0.5 A
Status and diagnostic indicators	LEDs: U _{S1} , U _{S2} (redundant voltage supply), Alarm (alarm contact), Link/Activity and PoE per Ethernet port
Additional functions	Autonegotiation

Security functions

Basic functions	Store-and-forward switch, 10/100/1000 Mbps, auto negotiation, redundant power supply, PoE according to IEEE 802.3at/802.3af, jumbo frames up to 10240 bytes, alarm contact
-----------------	--

Electrical properties

Local diagnostics	US1, US2 Supply voltage Green LED
	PoE PoE detection Orange LED
	LNK/ACT Link status/data transmission Green LED
	Alarm Power failure at US1 or US2/Link failure

Supply

Supply voltage (DC)	24 V DC
Supply voltage	48 V DC
Supply voltage range	18 V DC ... 57 V DC
Power supply connection	Via COMBICON, max. conductor cross section 2.5 mm ²
Inrush current	33.8 A (24 V DC for 3540 μs)
Residual ripple	3.6 V _{PP} (within the permitted voltage range)
Max. current consumption	6.93 A (Maximum, nominal load)
Typical current consumption	214 mA (at U _S = 24 V DC)

Function

Signal contact control voltage	48 V DC
Signal contact control current	0.5 A

Connection data

Connection technology

Connection name	Power supply
-----------------	--------------

Power supply

Connection method	Screw connection
Conductor cross section, rigid	0.2 mm ² ... 2.5 mm ²
Conductor cross section, flexible	0.2 mm ² ... 2.5 mm ²

FL SWITCH 1001T-4POE-GT-SFP - Industrial Ethernet Switch



1026932

<https://www.phoenixcontact.com/pc/products/1026932>

Conductor cross section AWG	24 ... 12
Stripping length	7 mm

Environmental and real-life conditions

Ambient conditions

Degree of protection	IP30
Ambient temperature (operation)	-40 °C ... 75 °C
Ambient temperature (storage/transport)	-40 °C ... 85 °C
Permissible humidity (operation)	5 % ... 95 % (non-condensing)
Permissible humidity (storage/transport)	5 % ... 95 % (non-condensing)
Air pressure (operation)	57 kPa ... 108 kPa (up to 4850 m above mean sea level)
Air pressure (storage/transport)	57 kPa ... 108 kPa (up to 4850 m above mean sea level)

Approvals

Conformity/Approvals

Conformance	CE-compliant
-------------	--------------

EMC data

Conformance with EMC directives	IEC 61000-6-2 IEC 61000-4-2 (ESD) Criterion B
	IEC 61000-4-3 (immunity to radiated interference) Criterion A
	IEC 61000-4-4 (burst) Criterion A
	IEC 61000-4-5 (surge) Criterion B
	IEC 61000-4-6 (immunity to conducted interference) Criterion A
	IEC 61000-4-8 (immunity to magnetic fields) Criterion A
Electromagnetic compatibility	EN 55032 (emitted interference) Criterion A
Electromagnetic compatibility	Conformance with EMC Directive 2004/108/EC

System properties

Functionality

Basic functions	Store-and-forward switch, 10/100/1000 Mbps, auto negotiation, redundant power supply, PoE according to IEEE 802.3at/802.3af, jumbo frames up to 10240 bytes, alarm contact
-----------------	--

Signaling

Status display	LEDs: U _{S1} , U _{S2} (redundant voltage supply), Alarm (alarm contact), Link/Activity and PoE per Ethernet port
----------------	--

FL SWITCH 1001T-4POE-GT-SFP - Industrial Ethernet Switch



1026932

<https://www.phoenixcontact.com/pc/products/1026932>

Approvals

To download certificates, visit the product detail page: <https://www.phoenixcontact.com/pc/products/1026932>



EAC

Approval ID: RU*-DE.*.B.00741/19



UL Listed

Approval ID: FILE E 238705



cUL Listed

Approval ID: FILE E 238705

cULus Listed

FL SWITCH 1001T-4POE-GT-SFP - Industrial Ethernet Switch



1026932

<https://www.phoenixcontact.com/pc/products/1026932>

Classifications

ECLASS

ECLASS-11.0	19170402
ECLASS-12.0	19170402
ECLASS-13.0	19170402

ETIM

ETIM 8.0	EC000734
----------	----------

UNSPSC

UNSPSC 21.0	43222600
-------------	----------

FL SWITCH 1001T-4POE-GT-SFP - Industrial Ethernet Switch



1026932

<https://www.phoenixcontact.com/pc/products/1026932>

Environmental product compliance

REACH SVHC	Lead 7439-92-1
China RoHS	Environmentally Friendly Use Period = 10;
	For information on hazardous substances, refer to the manufacturer's declaration available under "Downloads"

FL SWITCH 1001T-4POE-GT-SFP - Industrial Ethernet Switch



1026932

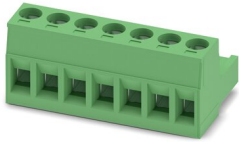
<https://www.phoenixcontact.com/pc/products/1026932>

Accessories

MSTB 2,5/ 7-ST - PCB connector

1754546

<https://www.phoenixcontact.com/pc/products/1754546>



PCB connector, nominal cross section: 2.5 mm², color: green, nominal current: 12 A, rated voltage (III/2): 320 V, contact surface: Tin, contact connection type: Socket, number of potentials: 7, number of rows: 1, number of positions: 7, number of connections: 7, product range: MSTB 2,5/...-ST, pitch: 5 mm, connection method: Screw connection with tension sleeve, screw head form: L Slotted, conductor/PCB connection direction: 0 °, locking clip: - Locking clip, plug-in system: COMBICON MSTB 2,5, locking: without, mounting: without, type of packaging: packed in cardboard

QUINT4-PS/1AC/48DC/5 - Power supply unit

2904610

<https://www.phoenixcontact.com/pc/products/2904610>



Primary-switched QUINT POWER power supply for DIN rail mounting with free choice of output characteristic curve and SFB (Selective Fuse Breaking) technology, input: 1-phase, output: 48 V DC / 5 A

FL SWITCH 1001T-4POE-GT-SFP - Industrial Ethernet Switch



1026932

<https://www.phoenixcontact.com/pc/products/1026932>

QUINT4-PS/1AC/48DC/10 - Power supply unit

2904611

<https://www.phoenixcontact.com/pc/products/2904611>



Primary-switched QUINT POWER power supply for DIN rail mounting with free choice of output characteristic curve and SFB (Selective Fuse Breaking) technology, input: 1-phase, output: 48 V DC / 10 A

TRIO-PS-2G/1AC/48DC/5 - Power supply unit

2903159

<https://www.phoenixcontact.com/pc/products/2903159>



Primary-switched TRIO power supply for DIN rail mounting, input: 1-phase, output: 48 V DC / 5 A, dynamic boost, tool-free fast connection technology for solid and stranded conductors with ferrule

FL SWITCH 1001T-4POE-GT-SFP - Industrial Ethernet Switch



1026932

<https://www.phoenixcontact.com/pc/products/1026932>

TRIO-PS-2G/1AC/48DC/10 - Power supply unit

2903160

<https://www.phoenixcontact.com/pc/products/2903160>



Primary-switched TRIO POWER power supply with push-in connection for DIN rail mounting, input: single phase, output: 48 V DC/10 A

UNO-PS/1AC/24DC/150W - Power supply unit

2904376

<https://www.phoenixcontact.com/pc/products/2904376>



Primary-switched UNO power supply for DIN rail mounting, input: 1-phase, output: 24 V DC/150 W

FL SWITCH 1001T-4POE-GT-SFP - Industrial Ethernet Switch



1026932

<https://www.phoenixcontact.com/pc/products/1026932>

UNO-PS/1AC/24DC/240W - Power supply unit

2904372

<https://www.phoenixcontact.com/pc/products/2904372>



Please use the following item in new systems: 1096432.

Primary-switched UNO power supply for DIN rail mounting, input: 1-phase, output: 24 V DC / 240 W

UNO2-PS/1AC/48DC/240W - Power supply unit

1110155

<https://www.phoenixcontact.com/pc/products/1110155>



Primary-switched power supply unit, UNO POWER, Screw connection, DIN rail mounting, input: 1-phase, output: 48 V DC / 5 A, Adjustable from 42 V DC ... 56 V DC

FL SWITCH 1001T-4POE-GT-SFP - Industrial Ethernet Switch



1026932

<https://www.phoenixcontact.com/pc/products/1026932>

FL PD 1001 T GT - Ethernet module

2891042

<https://www.phoenixcontact.com/pc/products/2891042>



Factoryline Power over Ethernet splitter (PD) for separating power and data according to IEEE 802.3af and at, no configuration required, can be used with 10, 100, 1000 Mbps networks, 24 V DC output voltage

DT-LAN-CAT.6+ - Surge protection device

2881007

<https://www.phoenixcontact.com/pc/products/2881007>



Surge protection in accordance with Class E_A (CAT6_A), for Gigabit Ethernet (up to 10 Gbps), token ring, FDDI/CDDI, ISDN, and DS1. Suitable for Power over Ethernet (PoE++ / 4PPoE) "Mode A" and "Mode B". RJ45 attachment plug with separate grounding cable and ground connection snap-on foot for NS 35 DIN rails.

FL SWITCH 1001T-4POE-GT-SFP - Industrial Ethernet Switch



1026932

<https://www.phoenixcontact.com/pc/products/1026932>

FL SEC PAC 4TX - Port Guard Security Element

2832865

<https://www.phoenixcontact.com/pc/products/2832865>

Layer1 security elements for 4 RJ45 network connections for use with patch boxes and panels



FL DIN RA - DIN rail adapter

2891053

<https://www.phoenixcontact.com/pc/products/2891053>

The FL DIN RA is installed in a standard, 19-inch rack (EIA-310-D, IEC 60297-3-100) to allow DIN rail mounted equipment to be rack mounted.



FL SWITCH 1001T-4POE-GT-SFP - Industrial Ethernet Switch



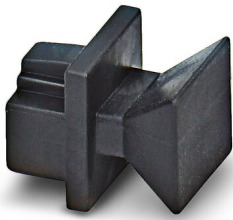
1026932

<https://www.phoenixcontact.com/pc/products/1026932>

FL RJ45 PROTECT CAP - Dust protection

2832991

<https://www.phoenixcontact.com/pc/products/2832991>

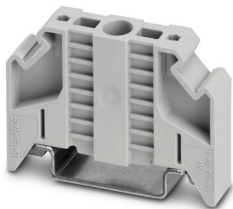


Dust protection caps for RJ45 socket

E/NS 35 N - End clamp

0800886

<https://www.phoenixcontact.com/pc/products/0800886>



End clamp, width: 9.5 mm, color: gray

FL SWITCH 1001T-4POE-GT-SFP - Industrial Ethernet Switch



1026932

<https://www.phoenixcontact.com/pc/products/1026932>

FL SFP SX - Media module

2891754

<https://www.phoenixcontact.com/pc/products/2891754>



Gigabit SFP module for transmission up to 1 km with a wavelength of 850 nm.

FL SFP SX2 - Media module

2702397

<https://www.phoenixcontact.com/pc/products/2702397>



Gigabit SFP module for transmission up to 2 km with a wavelength of 1310 nm.

FL SWITCH 1001T-4POE-GT-SFP - Industrial Ethernet Switch



1026932

<https://www.phoenixcontact.com/pc/products/1026932>

FL SFP LX10-B - Media module

1025401

<https://www.phoenixcontact.com/pc/products/1025401>



Gigabit SFP module for transmission up to 10 km with a wavelength of 1310 nm.

FL SFP LX - Media module

2891767

<https://www.phoenixcontact.com/pc/products/2891767>



Gigabit SFP module for transmission up to 30 km with a wavelength of 1310 nm.

FL SWITCH 1001T-4POE-GT-SFP - Industrial Ethernet Switch



1026932

<https://www.phoenixcontact.com/pc/products/1026932>

FL SFP LH - Media module

2989912

<https://www.phoenixcontact.com/pc/products/2989912>



Gigabit SFP module for transmission up to 80 km with a wavelength of 1,550 nm.

FL SFP WDM10-SET - Media module

2702442

<https://www.phoenixcontact.com/pc/products/2702442>



Gigabit SFP WDM set for transmission up to a maximum of 10 km on a single fiber with a wavelength of 1310/1550 nm.

FL SWITCH 1001T-4POE-GT-SFP - Industrial Ethernet Switch



1026932

<https://www.phoenixcontact.com/pc/products/1026932>

FL SFP GT - Media module

2989420

<https://www.phoenixcontact.com/pc/products/2989420>



Gigabit SFP module for transmission up to 100 m.

FL CAT5 PATCH 0,5 - Patch cable

2832263

<https://www.phoenixcontact.com/pc/products/2832263>



Patch cable, CAT5, assembled, 0.5 m

FL SWITCH 1001T-4POE-GT-SFP - Industrial Ethernet Switch



1026932

<https://www.phoenixcontact.com/pc/products/1026932>

FL CAT5 PATCH 1,0 - Patch cable

2832276

<https://www.phoenixcontact.com/pc/products/2832276>

Patch cable, CAT5, assembled, 1 m



FL CAT5 PATCH 2,0 - Patch cable

2832289

<https://www.phoenixcontact.com/pc/products/2832289>

Patch cable, CAT5, assembled, 2 m



FL SWITCH 1001T-4POE-GT-SFP - Industrial Ethernet Switch



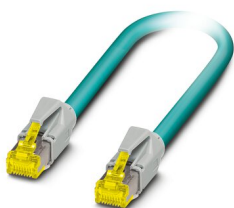
1026932

<https://www.phoenixcontact.com/pc/products/1026932>

NBC-R4AC-R4AC-IE8A/.../... - Patch cable

1411854

<https://www.phoenixcontact.com/pc/products/1411854>

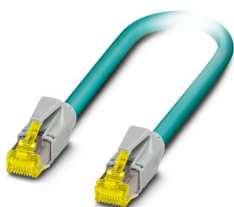


Patch cable, degree of protection: IP20, number of positions: 8, 10 Gbps, CAT6_A, cable outlet: straight, Ethernet

NBC-R4AC/10G-R4AC/10G-94F/2,0 - Patch cable

1408360

<https://www.phoenixcontact.com/pc/products/1408360>



Patch cable, CAT6_A, 4-pair, shielded, connection not crossed (line), assembled at both ends with RJ45/IP20 connectors, outer sheath material: PUR, length: 2.0 m

FL SWITCH 1001T-4POE-GT-SFP - Industrial Ethernet Switch



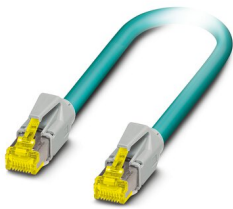
1026932

<https://www.phoenixcontact.com/pc/products/1026932>

NBC-R4AC/10G-R4AC/10G-94F/3,0 - Patch cable

1408365

<https://www.phoenixcontact.com/pc/products/1408365>



Patch cable, CAT6_A, 4-pair, shielded, connection not crossed (line), assembled at both ends with RJ45/IP20 connectors, outer sheath material: PUR, length: 3.0 m

NBC-R4AC/1,0-93B/R4AC - Patch cable

1408968

<https://www.phoenixcontact.com/pc/products/1408968>



Patch cable, degree of protection: IP20, cable length: 1 m, number of positions: 4, 100 Mbps, CAT5, material: PA 6.6, PROFINET

FL SWITCH 1001T-4POE-GT-SFP - Industrial Ethernet Switch



1026932

<https://www.phoenixcontact.com/pc/products/1026932>

NBC-R4AC/2,0-93B/R4AC - Patch cable

1408969

<https://www.phoenixcontact.com/pc/products/1408969>



Patch cable, degree of protection: IP20, cable length: 2 m, number of positions: 4, 100 Mbps, CAT5, material: PA 6.6, PROFINET

NBC-R4AC/5,0-93B/R4AC - Patch cable

1408970

<https://www.phoenixcontact.com/pc/products/1408970>



Patch cable, degree of protection: IP20, cable length: 5 m, number of positions: 4, 100 Mbps, CAT5, material: PA 6.6, PROFINET

FL SWITCH 1001T-4POE-GT-SFP - Industrial Ethernet Switch



1026932

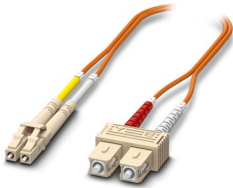
<https://www.phoenixcontact.com/pc/products/1026932>

FOC-LC:PA-SC:PA-OM2:D01/1 - FO patch cable

1115607

<https://www.phoenixcontact.com/pc/products/1115607>

Multi-mode OM2 duplex jumper, LC-SC, UPC polishing, length 1 m

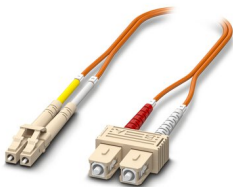


FOC-LC:PA-SC:PA-OM2:D01/2 - FO patch cable

1115605

<https://www.phoenixcontact.com/pc/products/1115605>

Multi-mode OM2 duplex jumper, LC-SC, UPC polishing, length 2 m



FL SWITCH 1001T-4POE-GT-SFP - Industrial Ethernet Switch



1026932

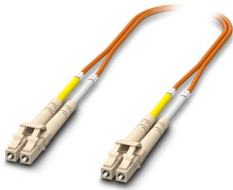
<https://www.phoenixcontact.com/pc/products/1026932>

FOC-LC:PA-LC:PA-OM2:D01/1 - FO patch cable

1115633

<https://www.phoenixcontact.com/pc/products/1115633>

Multi-mode OM2 duplex jumper, LC-LC, UPC polishing, length 1 m

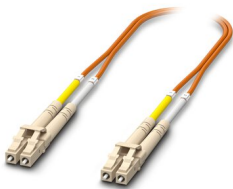


FOC-LC:PA-LC:PA-OM2:D01/2 - FO patch cable

1115634

<https://www.phoenixcontact.com/pc/products/1115634>

Multi-mode OM2 duplex jumper, LC-LC, UPC polishing, length 2 m



FL SWITCH 1001T-4POE-GT-SFP - Industrial Ethernet Switch



1026932

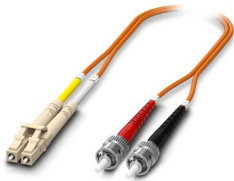
<https://www.phoenixcontact.com/pc/products/1026932>

FOC-LC:PA-ST:PA-OM2:D01/1 - Fiber optic cable

1115588

<https://www.phoenixcontact.com/pc/products/1115588>

Multi-mode OM2 duplex jumper, LC-ST, UPC polishing, length 1 m

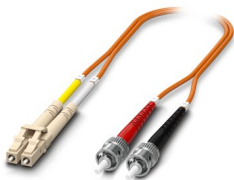


FOC-LC:PA-ST:PA-OM2:D01/2 - Fiber optic cable

1115587

<https://www.phoenixcontact.com/pc/products/1115587>

Multi-mode OM2 duplex jumper, LC-ST, UPC polishing, length 2 m



FL SWITCH 1001T-4POE-GT-SFP - Industrial Ethernet Switch



1026932

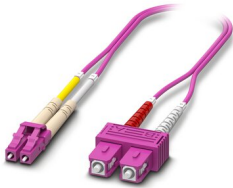
<https://www.phoenixcontact.com/pc/products/1026932>

FOC-LC:PA-SC:PA-OM4:D01/1 - FO patch cable

1115601

<https://www.phoenixcontact.com/pc/products/1115601>

Multi-mode OM4 duplex jumper, LC-SC, UPC polishing, length 1 m

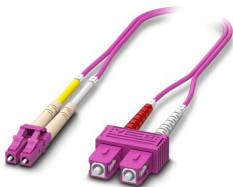


FOC-LC:PA-SC:PA-OM4:D01/2 - FO patch cable

1115600

<https://www.phoenixcontact.com/pc/products/1115600>

Multi-mode OM4 duplex jumper, LC-SC, UPC polishing, length 2 m



FL SWITCH 1001T-4POE-GT-SFP - Industrial Ethernet Switch



1026932

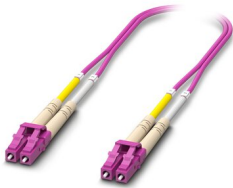
<https://www.phoenixcontact.com/pc/products/1026932>

FOC-LC:PA-LC:PA-OM4:D01/1 - FO patch cable

1115625

<https://www.phoenixcontact.com/pc/products/1115625>

Multi-mode OM4 duplex jumper, LC-LC, UPC polishing, length 1 m



FOC-LC:PA-LC:PA-OM4:D01/2 - FO patch cable

1115624

<https://www.phoenixcontact.com/pc/products/1115624>

Multi-mode OM4 duplex jumper, LC-LC, UPC polishing, length 2 m



FL SWITCH 1001T-4POE-GT-SFP - Industrial Ethernet Switch



1026932

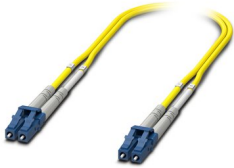
<https://www.phoenixcontact.com/pc/products/1026932>

FOC-LC:PA-LC:PA-OS2:D01/1 - FO patch cable

1115636

<https://www.phoenixcontact.com/pc/products/1115636>

Single-mode OS2 duplex jumper, LC-LC, UPC polishing, length 1 m

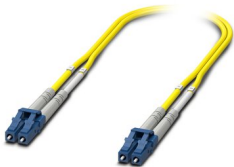


FOC-LC:PA-LC:PA-OS2:D01/2 - FO patch cable

1115629

<https://www.phoenixcontact.com/pc/products/1115629>

Single-mode OS2 duplex jumper, LC-LC, UPC polishing, length 2 m



FL SWITCH 1001T-4POE-GT-SFP - Industrial Ethernet Switch



1026932

<https://www.phoenixcontact.com/pc/products/1026932>

FOC-LC:PA-ST:PA-OS2:D01/1 - FO patch cable

1115596

<https://www.phoenixcontact.com/pc/products/1115596>

Single-mode OS2 duplex jumper, LC-ST, UPC polishing, length 1 m



FOC-LC:PA-ST:PA-OS2:D01/2 - FO patch cable

1115595

<https://www.phoenixcontact.com/pc/products/1115595>

Single-mode OS2 duplex jumper, LC-ST, UPC polishing, length 2 m



FL SWITCH 1001T-4POE-GT-SFP - Industrial Ethernet Switch



1026932

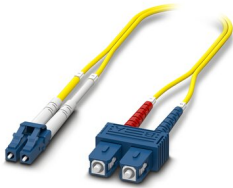
<https://www.phoenixcontact.com/pc/products/1026932>

FOC-LC:PA-SC:PA-OS2:D01/1 - FO patch cable

1115618

<https://www.phoenixcontact.com/pc/products/1115618>

Single-mode OS2 duplex jumper, LC-SC, UPC polishing, length 1 m

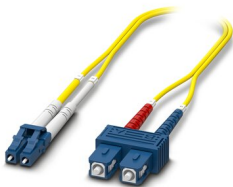


FOC-LC:PA-SC:PA-OS2:D01/2 - FO patch cable

1115617

<https://www.phoenixcontact.com/pc/products/1115617>

Single-mode OS2 duplex jumper, LC-SC, UPC polishing, length 2 m



Phoenix Contact 2023 © - all rights reserved
<https://www.phoenixcontact.com>

PHOENIX CONTACT GmbH & Co. KG
Flachsmarktstraße 8
D-32825 Blomberg
+49 (0) 5235-3 00
info@phoenixcontact.com